



# LED Gas Station Canopy Lights



Watt	100W (Replaces 250W to 320W Metal Halide)
Watt	150W (Replaces 400W Metal Halide)
Product	Gas Station Canopy
Colors Temperature	4000K & 5500K
Input Voltage	120V / 277V
CRI	85
LED Type	CREE
Driver Type	Mean Well
Luminous Flux	100W 10500 Lumens, 150W 16200 Lumens
Life	50000 Hours
View Angle	120 Degree with 2 adjustable lenses
Fixture Material	Die Cast Aluminum / Glass Lens
Mounting	Recess or Suspended
IP Rating	IP 65 Moisture Proof
Dimensions	Outside 15.75"X15.75", Inside 14"X13.25", 4.5" High
Weight	19.5 Lbs
Warranty	3 Years
Code	ELGS-100-X (100W), ELGS-150-X (150W)

X = Color Temperature

4 = 4000K

55 = 5500K

Add "/S" at the end of part number for suspended

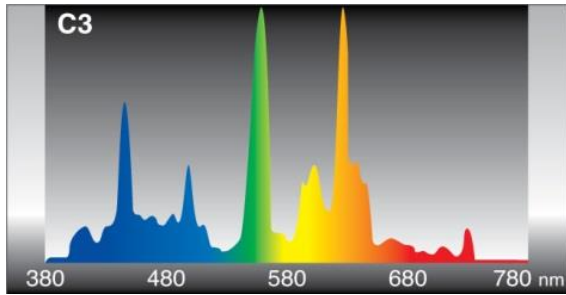
Add "/R" at the end of part number for recess

(877) 221-8182

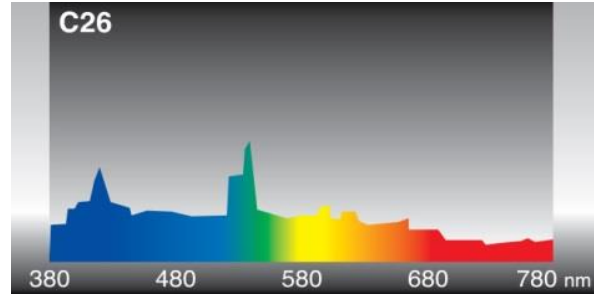
(818) 351-8900 Fax

www.lgitek.com

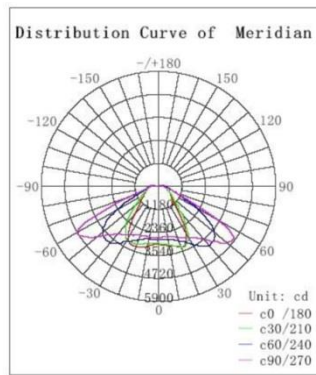
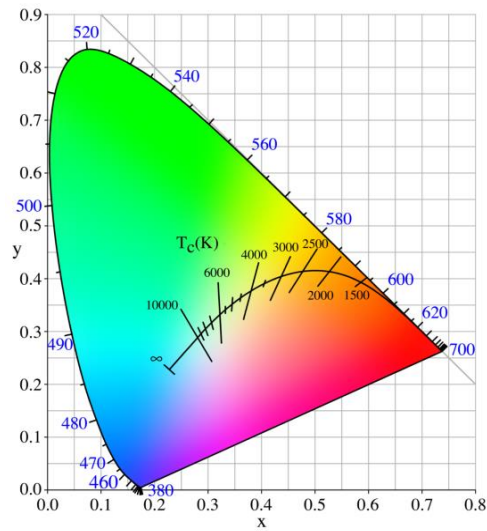
## Photometric Data



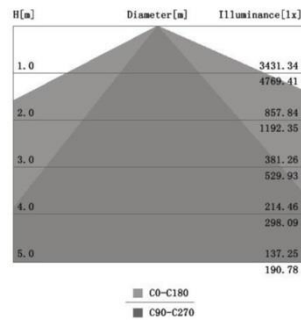
**4000K**



**5500K**



**Illumination Cone Curve**



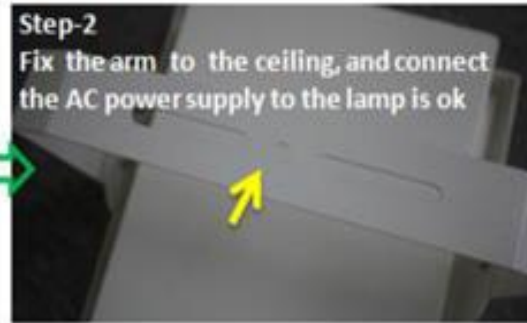
All parts of this document are ownership of LGI. All rights reserved. This document and the included information are provided without any responsibility deriving from mistakes or omissions. No parts can be cut, reproduced or used without written authorization. LGI maintains the right to change the included data without notice due to improvements of the products.

## INSTALLATION

- \* Make sure to cut off the power supply before installation.
- \* The lamp should be installed by qualified electrician.



### STYLE-A -- Suspending Installation



### STYLE-B - Recessed Installation



## APPLICATIONS



## Dimensions in mm

